

The Land Between is a transition zone between the Canadian Shield to the north and the St. Lawrence Lowlands to the south (Fig 1). These areas are known as ecotones, by ecologists, and contain some of the highest diversity in Ontario.

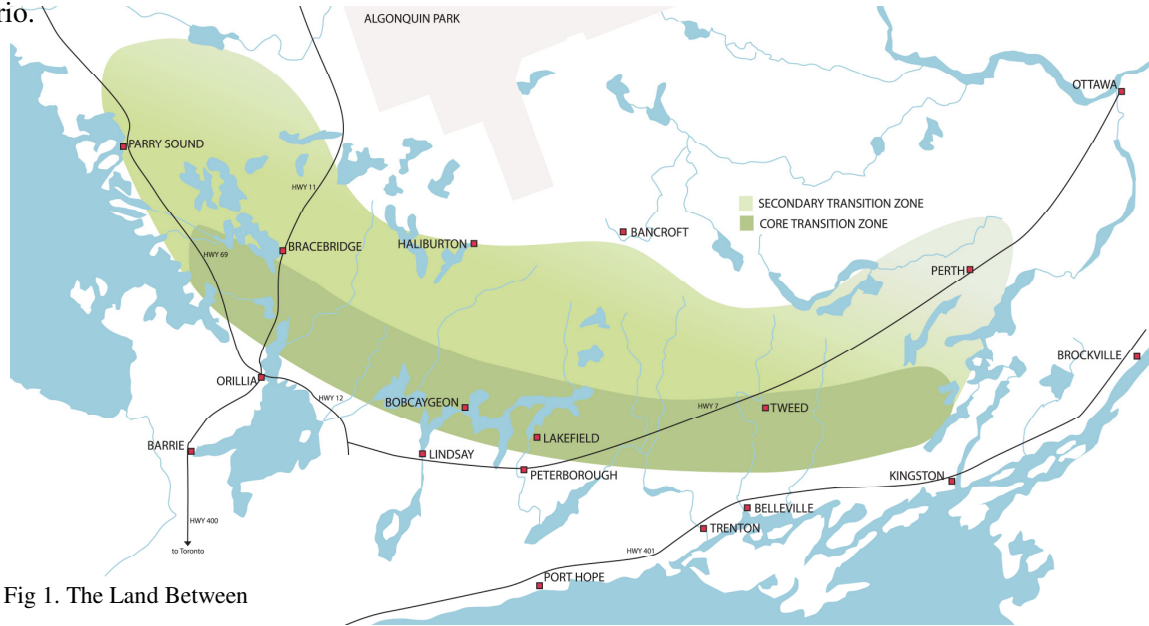


Fig 1. The Land Between

As a transition zone, the Land Between contains representative elements from its bordering ecoregions; therefore the granite from the shield is evident and the limestone that lies beneath the arable soils in the St. Lawrence Lowlands is exposed. These parent rock materials appear as barrens with very little soil across the region (less than 15cm). (Fig. 2) The Land Between also contains the highest percentage of shoreline to area, therefore interconnected aquatic resources, than anywhere else in Ontario (Fig. 3)

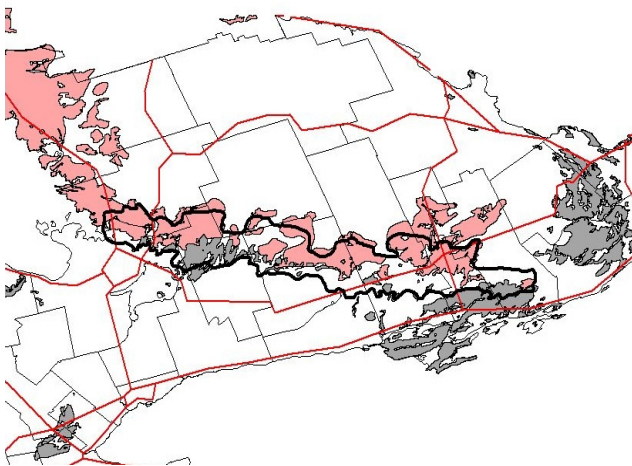


Fig. 2. Granite and Limestone Barrens in Ontario- The Land Between

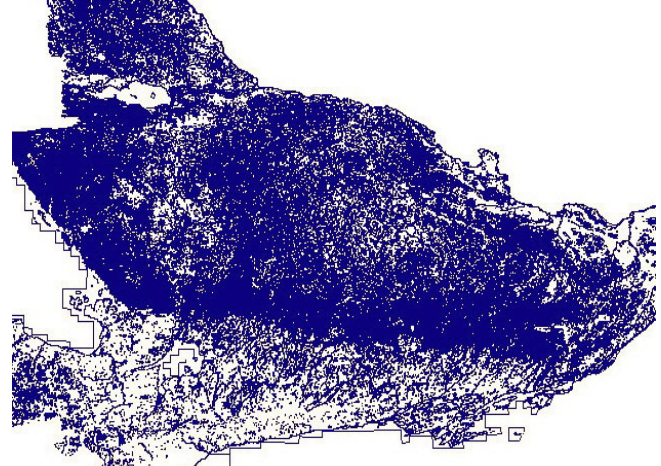


Fig. 3. Shorelines in Ontario

The rock barrens and areas with shallow soil are found in the same areas as the highest percentage of shorelines/surface water (Fig 4) making this region extremely susceptible to contamination, and this contamination would be far reaching.

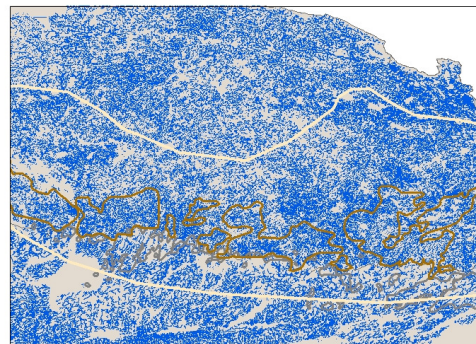


Fig 4. Barrens and Shorelines